

Tag: _____ Engineer: _____
 Project: _____ Contractor: _____
 Location: _____ Architect: _____
 Date: _____ Submitted by: _____



Model MBD-57
 Manual Balancing Damper
 (Multi-Blade)



Application:

The MBD-57 is designed to provide a cost effective and reliable solution to volume control and balancing of an HVAC system. The MBD-57's rigid frame and integrally braced corners provide true damper alignment and greatly resists the chance of the damper being installed out of square.

The MBD-57 is provided with 3V type blades and available in parallel or opposed blade orientations. The MBD-57 is designed for balancing and volume control and not for positive shut off or for automatic control (such as by an actuator). The MBD-57 meets the SMACNA construction requirements for manual balancing dampers.

Standard Construction:

FRAME: Roll-formed 20 ga. galvanized steel hat section with staked corners with integral bracing.

BLADES: 16 ga. Roll-formed, galvanized steel

Minimum width: 4.250" (108) Maximum width: 7.250" (184)

BEARINGS: Nylon, press-fit to Frame.

AXLES: 1/2" (13) dia. plated steel.

LINKAGE: Concealed in frame. Linkage bars are .125" (3) thick plated steel.

FINISH: Mill galvanized.

EXTENDED SHAFT: Removable, 6" long x 1/2" dia.(152 x 13) plated steel coupled to square axle.

MAX. TEMPERATURE: 250°F (121°C)

MINIMUM SIZE: 5"w x 4"h (127 x 102)

MAXIMUM SIZES:

Single Section - 48"w x 72"h (1219 x 1829)

Multiple Section - Unlimited

Optional Construction:

Locking hand quadrant (1/2 round)

Standoffs (supplied loose):

2" (51) Standoff

1" (25) Standoff

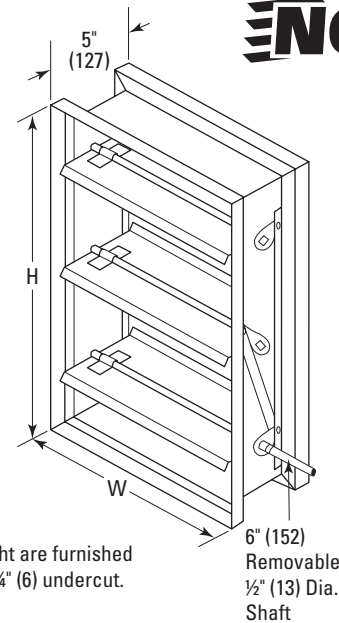
Blade Action

Parallel

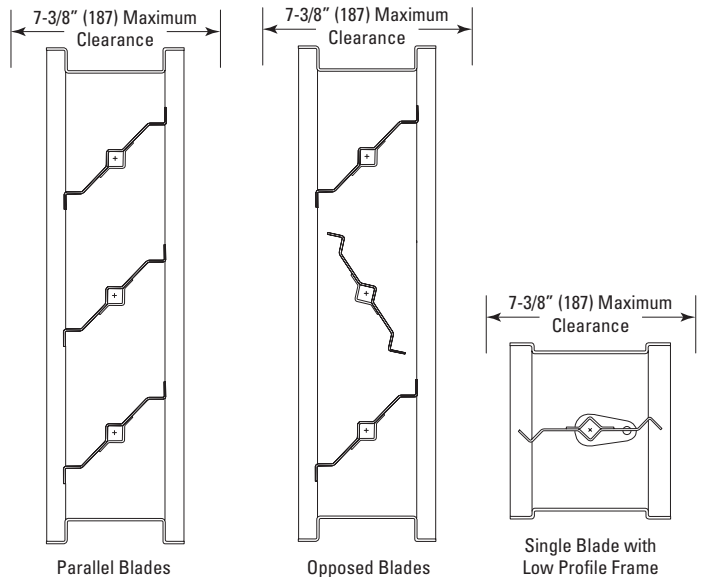
Opposed

Notes:

- Not recommended with blades running vertically.
- The MBD-57 is not for positive shutoff. They are intended for balancing purposes only.
- Not provided with blade stops.



Width and Height are furnished approximately 1/4" (6) undercut.



Low Profile Frame provided for damper under 18" high.

RATINGS		
DAMPER	MAX. PRESSURE	MAX. VELOCITY
12" (305)	5" WC	3000 FPM
24" (610)	5" WC	3000 FPM
36" (914)	4" WC	2500 FPM
48" (1219)	2.5" WC	2000 FPM

All dimensions shown in inches, parentheses () indicate millimeters.

1 As part of our continuous improvement program, we reserve the right to make further improvements without notice.

Tag: _____ Engineer: _____
 Project: _____ Contractor: _____
 Location: _____ Architect: _____
 Date: _____ Submitted by: _____



Model MBD-RD-88

Round Manual Balancing Damper



Application:

The MBD-RD-88 is designed to provide a cost effective and reliable solution to volume control and balancing of an HVAC system. The MBD-RD-88's rigid round shell is welded for minimal leakage and provided in varying gauges depending on diameter.

The MBD-RD-88 is designed for balancing and volume control and not for positive shut off or for automatic control (such as by an actuator).

Standard Construction:

FRAME - Galvanized Steel, Rolled Reinforcement	
DIAMETER	GAUGE
4" - 8" (102 - 204)	22 ga.
9" - 12" (229 - 305)	20 ga.
13" - 24" (330 - 610)	18 ga.

BLADE: 16 ga. Galvanized steel with welded channel reinforcement

BEARINGS: Bronze oilite

AXLES: 3/8" (9.5) square, plated steel

FINISH: Mill galvanized.

EXTENDED SHAFT: 3/8" (9.5) square, plated steel 4" (102) beyond frame.

MAX. TEMPERATURE: 200°F (93°C)

SIZES: 4" - 24" (102 - 610) diameters.

MAXIMUM VELOCITY: 2000 FPM

MAXIMUM PRESSURE: 4" WC

Optional Construction:

Locking quadrant (3/8" square)

Standoffs:

2" (51) Standoff

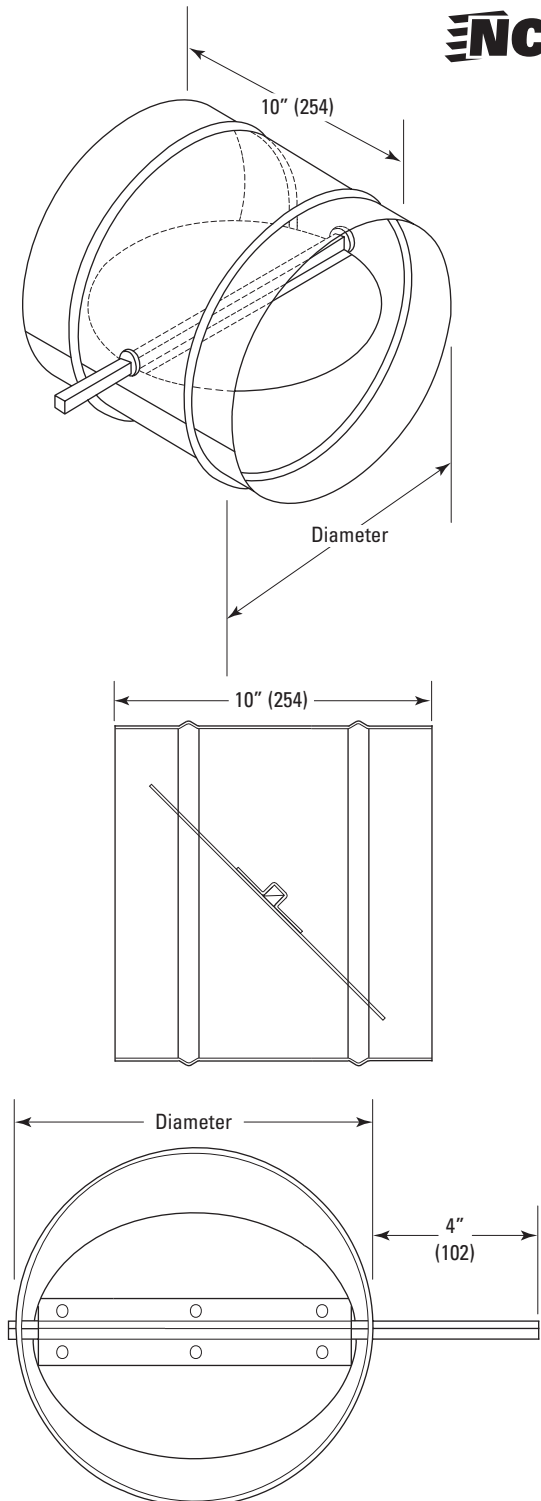
1" (25) Standoff

Notes:

- Dampers fabricated 1/8" (3) under opening size unless otherwise noted
- Blade stops are not provided

All dimensions shown in inches, parentheses () indicate millimeters.

1 As part of our continuous improvement program, we reserve the right to make further improvements without notice. **Submittal - Model MBD-RD-88 - 0718**



Tag:	Engineer:
Project:	Contractor:
Location:	Architect:
Date:	Submitted by:



Model PBD-20

Economy Single Blade Manual
Balancing Damper



Application:

The PBD-20 is designed to provide a very cost effective yet efficient solution to regulating the flow of air in an HVAC system. The PBD-20 is manufactured as a single blade balancing damper and provided with a manual hand quadrant. The PBD-20 is not intended for positive shut off or automatic control (such as with an actuator).

Standard Construction:

FRAME: 18 ga. galvanized steel.

BLADES: 18 ga. galvanized steel.

AXLES: 1/4" (6 mm) square plated steel.

FINISH: Mill galvanized.

MINIMUM SIZE: 6" x 4" (152 x 102)

MAXIMUM SIZE: 36" x 12" (914 x 305)

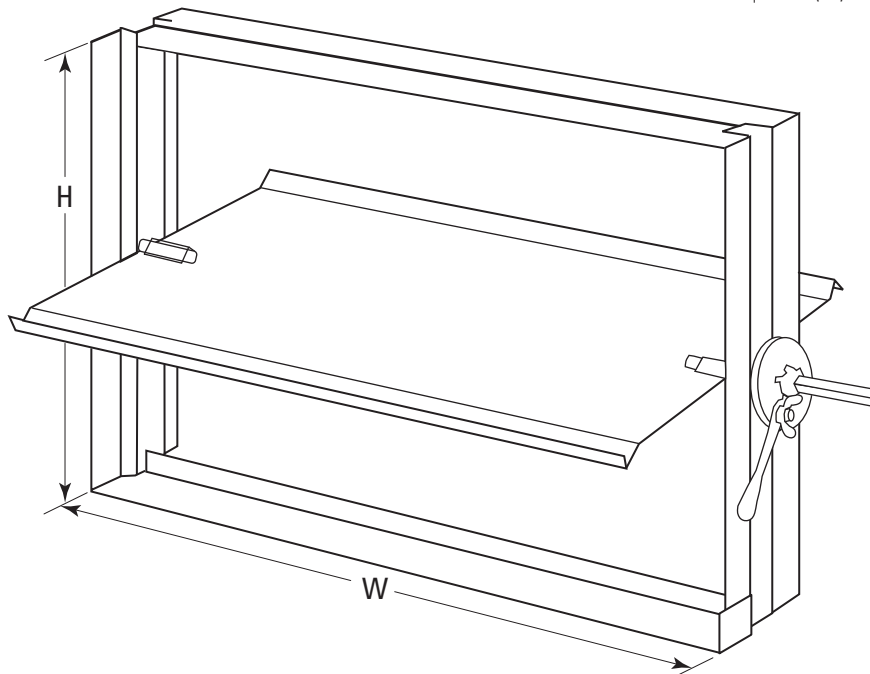
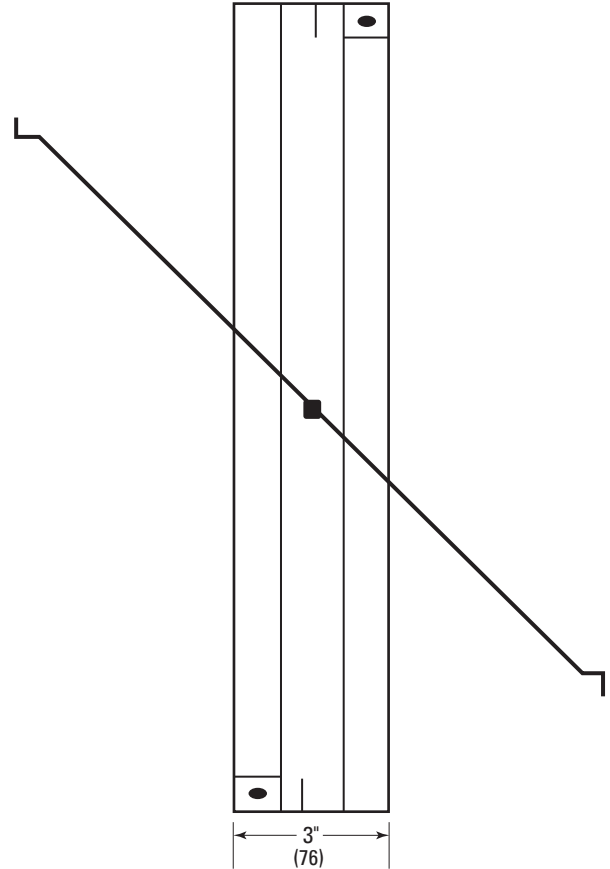
OPERATOR: Locking quadrant.

RATING: Maximum velocity: 1500 FPM

Maximum pressure: 1.0" WC

Notes:

- All dampers are fabricated 1/4" (6) under listed size unless otherwise specified "actual or exact".
- All dampers must be installed with blades running horizontally.
- For SMACNA compliance for dampers over 12" (305) in height, use MBD-57.



All dimensions shown in inches, parentheses () indicate millimeters.

1 As part of our continuous improvement program, we reserve the right to make further improvements without notice.

Submittal - Model PBD-20 - 1117

Tag:	Engineer:
Project:	Contractor:
Location:	Architect:
Date:	Submitted by:



Model PBD-20RS

Round Economy Manual
Balancing Damper



Application:

The PBD-20RS is designed to provide a very cost effective yet efficient solution to regulating the flow of air in an HVAC system. The PBD-20RS is manufactured as a single blade true round balancing damper and provided with a manual hand quadrant. The PBD-20RS is not intended for positive shut off or automatic control (such as with an actuator).

Standard Construction:

FRAME: 8" (203) long sleeve, 20 ga. galvanized steel

BLADES: 18 ga. galvanized steel.

AXLES: 1/4" (6) square plated steel.

FINISH: Mill galvanized.

MINIMUM SIZE: 4" (102)

MAXIMUM SIZE: 20" (508)

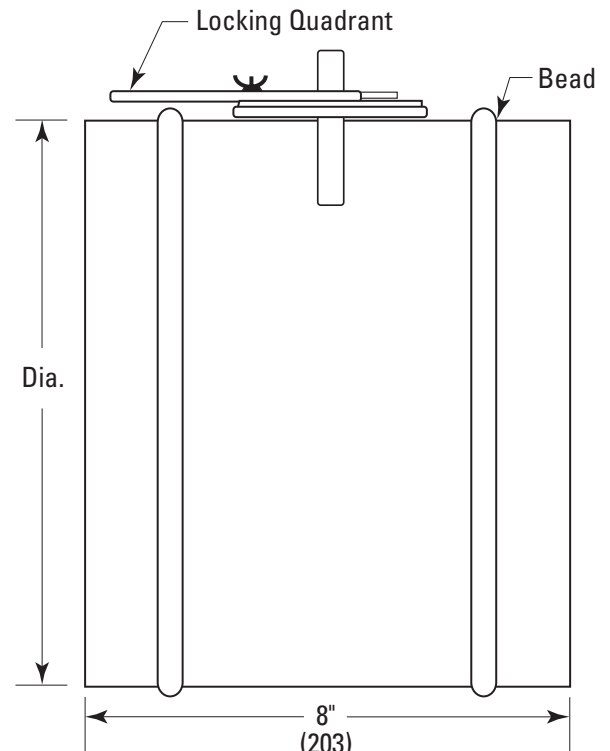
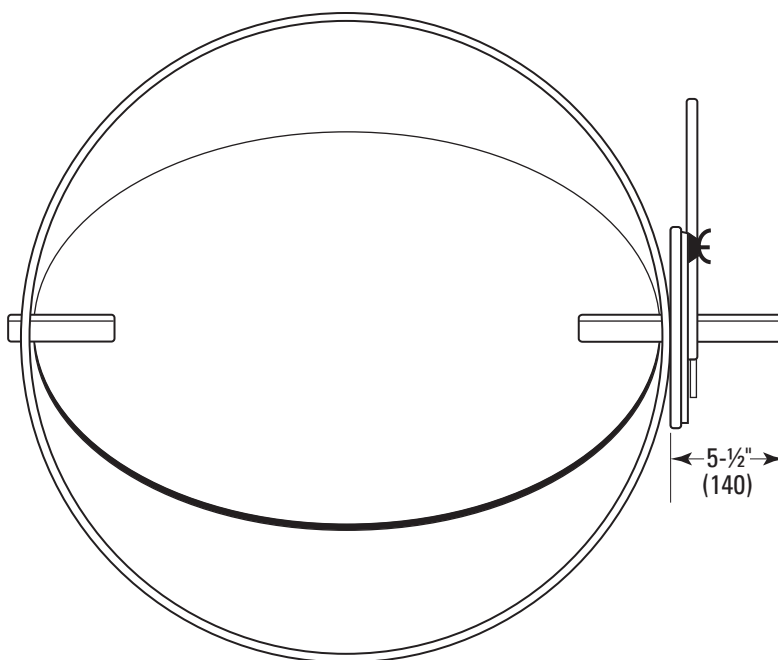
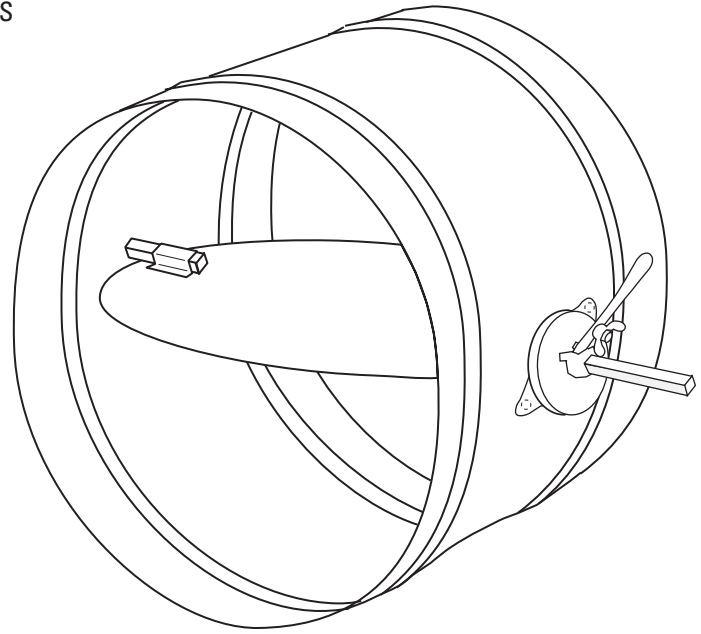
OPERATOR: Locking quadrant.

RATING: Maximum velocity: 1500 FPM

Maximum pressure: 1.0" WC

Notes:

- All dampers are fabricated 1/8" (3) under listed size unless otherwise specified "actual or exact".
- Not recommended for motor operation.
- For sizes larger than 20" (508) use PBD-100RS.



All dimensions shown in inches, parentheses () indicate millimeters.

1 As part of our continuous improvement program, we reserve the right to make further improvements without notice.

Submittal - Model PBD-20RS - 1117